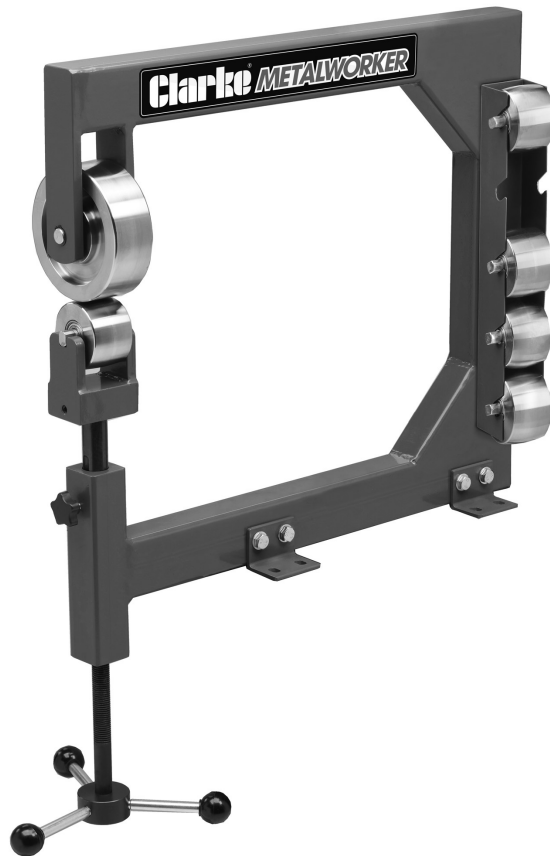


# CLARKE<sup>®</sup>

## **METALWORKER**



ENGLISH WHEEL

MODEL NO: CEW2

PART NO: 7627903

ASSEMBLY & OPERATING  
INSTRUCTIONS

ORIGINAL INSTRUCTIONS

DL0524

---

## **INTRODUCTION**

---

Thank you for purchasing this CLARKE English Wheel.

This English Wheel is suitable for forming and shaping light gauge steel and aluminium panels and for removing dents, smoothing hammer marks, flattening welds etc. Pressure is applied by adjusting the lower anvil roller. Standard anvil rollers are supplied as listed in the specification.

Before attempting to use this product, please read this manual thoroughly and follow the instructions carefully. In doing so you will ensure the safety of yourself and that of others around you and you can look forward to your purchase giving you long and satisfactory service.

---

## **GUARANTEE**

---

This product is guaranteed against faulty manufacture for a period of 12 months from the date of purchase. Please keep your receipt which will be required as proof of purchase.

This guarantee is invalid if the product is found to have been abused or tampered with in any way, or not used for the purpose for which it was intended.

Faulty goods should be returned to their place of purchase, no product can be returned to us without prior permission.

This guarantee does not effect your statutory rights.

---

# SAFETY PRECAUTIONS

---



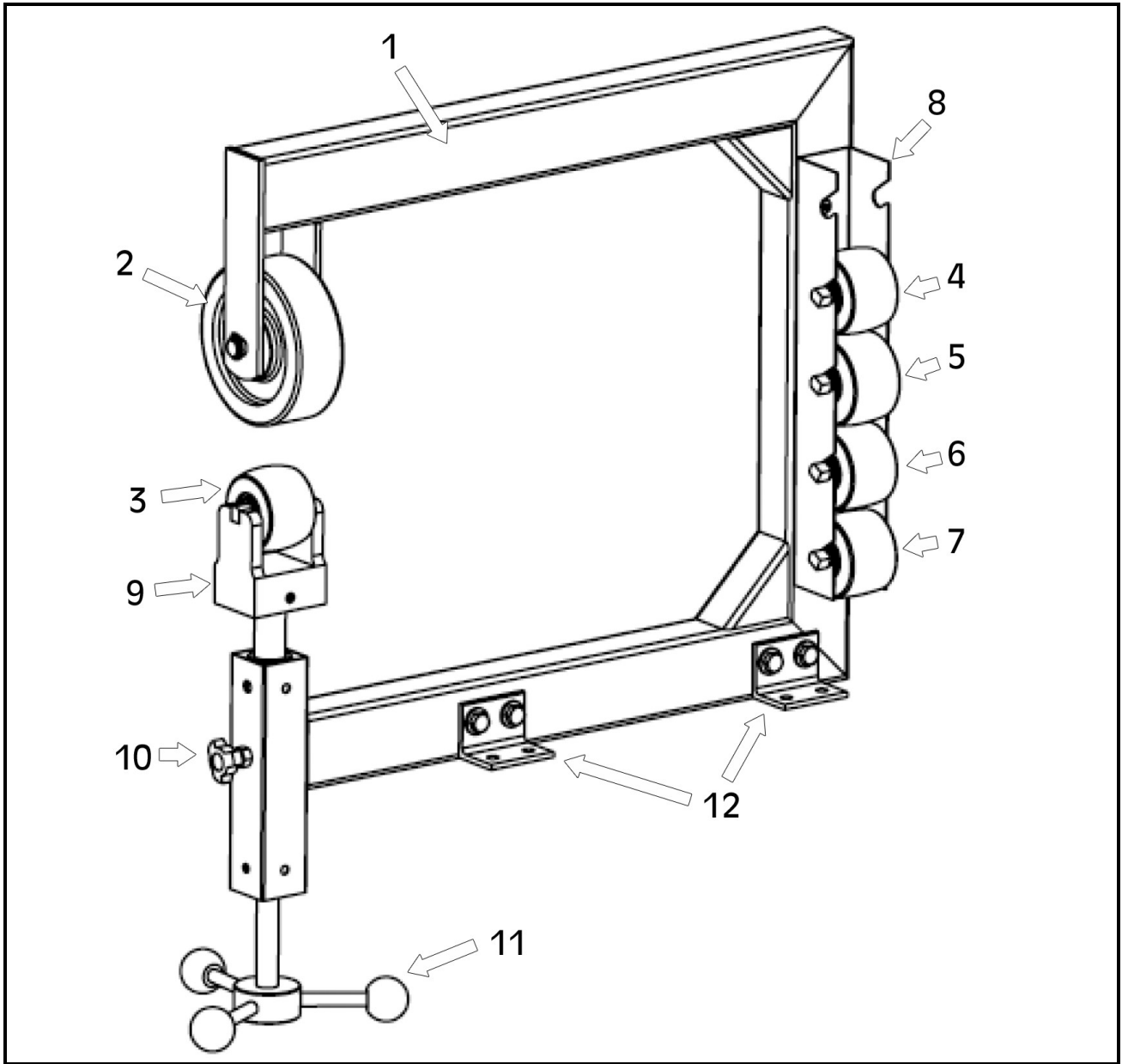
**WARNING: THE USER MUST FOLLOW ALL INSTRUCTIONS WITHIN THIS INSTRUCTION BOOKLET**

---

To protect against serious injury, use common sense and observe the following precautions when using this product. CLARKE International is not responsible for misuse of the equipment.

- **ALWAYS** study these instructions before operating and pay close attention to all warnings.
- **ALWAYS** keep the work area clean and well lit. Cluttered and dark areas invite accidents.
- **ALWAYS** secure the English Wheel to a solid workbench before use.
- **ALWAYS** keep the work area free of obstructions.
- Stay alert, watch what you are doing and use common sense when you are using this equipment. **DO NOT** operate this tool when you are tired, ill or under the influence of alcohol, drugs or medication.
- Safety equipment such as gloves and non-skid shoes/boots used for appropriate conditions will reduce personal injuries. For best footing, wear rubber soled footwear. Keep floor clear of oil, scrap wood etc.
- **DO NOT** overreach. Keep your proper footing and balance at all times.
- Concentrate on the job in hand, no matter how trivial it may seem. Be aware that accidents can be caused by carelessness due to familiarity.
- **DO NOT** wear loose clothing or jewellery which may get caught in moving parts. Wear protective hair covering to contain long hair.
- Keep equipment clean for the best and safest performance. Check for misalignment or binding of moving parts, broken parts, or any condition that may affect the tools operation. If damaged, have the tool repaired before use.
- **ALWAYS** hold the workpiece securely. Large work pieces should always be well supported to avoid loss of control.
- Sheet metal may have sharp edges. **ALWAYS** wear gloves when handling sheet metal and use caution when bending and cutting.
- Rollers are heavy, take care when handling and keep hands away from contact areas.

# INVENTORY



NO	DESCRIPTION	NO	DESCRIPTION
1	Frame	7	Lower Wheel 8" (20.3cm) Radius
2	Upper Wheel 149mm x 51mm	8	Lower Wheel Storage Rack
3	Lower Wheel 3" (7.6cm) Radius	9	Lower Wheel Bracket
4	Lower Wheel 4" (10.1cm) Radius	10	Locking Nut
5	Lower Wheel 5" (12.7cm) Radius	11	Adjustment Handle
6	Lower Wheel 6" (15.2cm) Radius	12	Mounting Brackets

---

## SPECIFICATION

---

<b>Model</b>	<b>CEW2</b>
<b>Dimensions (Assembled)</b>	
Depth (mm)	780
Width (including handle) (mm)	255
Height (mm)	800
Throat (mm) (Centre of Wheel to Inner Upright)	560
Frame Thickness (mm)	55
Weight (kg)	36
<b>Capacity</b>	
Mild Steel	16 Gauge, 1.5mm
Aluminium	14 Gauge, 1.8mm
Copper	14 Gauge, 1.8mm

---

## WORKBENCH MOUNTING

---

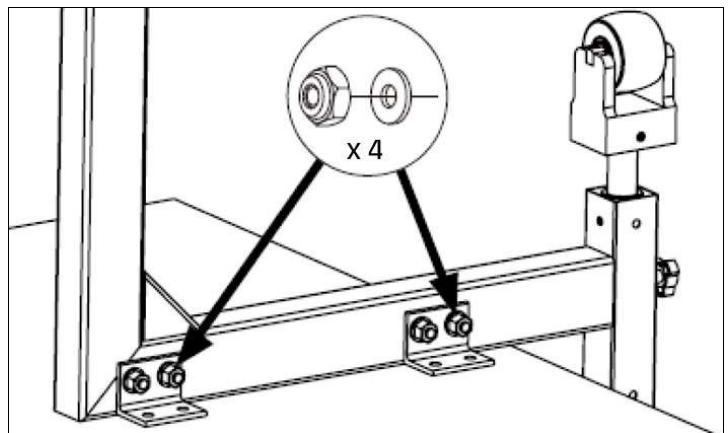
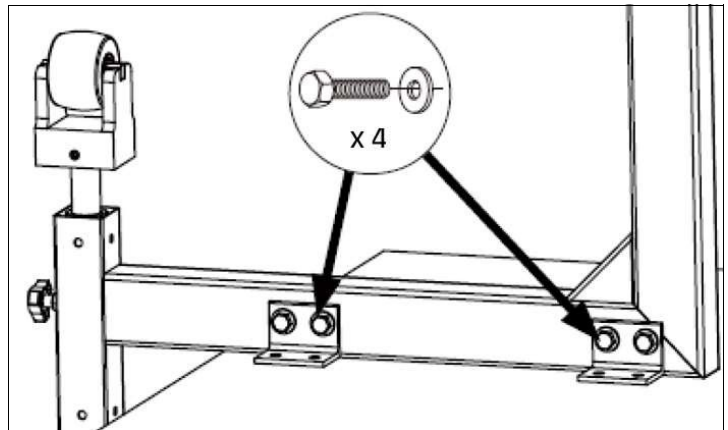
- The forces exerted on the English Wheel during operation are substantial. The English Wheel must be firmly secured to a workbench or table that will support the weight and dynamic pressures of the operation.
- Make sure that you have a suitable workbench setup for the English Wheel before performing the assembly.

## ASSEMBLY

1. Before you start assembling your English Wheel, you will require the following tools:

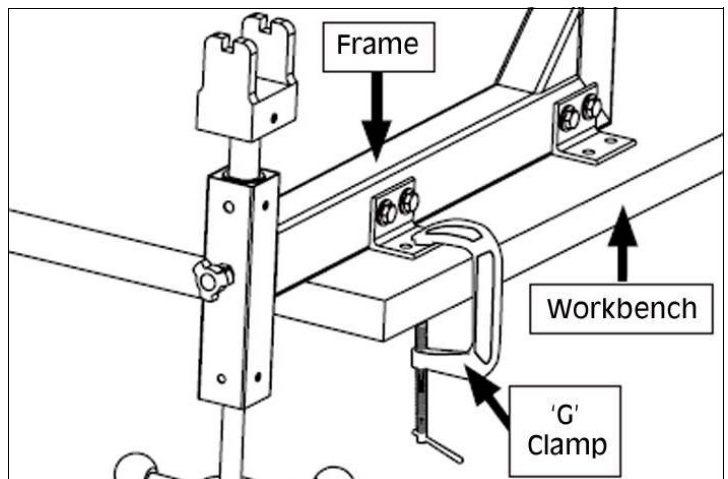
- 2 x 17mm spanners or adjustable wrenches
- 3/16 hex key
- a pair of circlip pliers

2. Attach the 4 mounting brackets to the frame with the M10-1.5 x 80 hex bolts, 10mm flat washers and M10-1.5 locking nuts supplied.

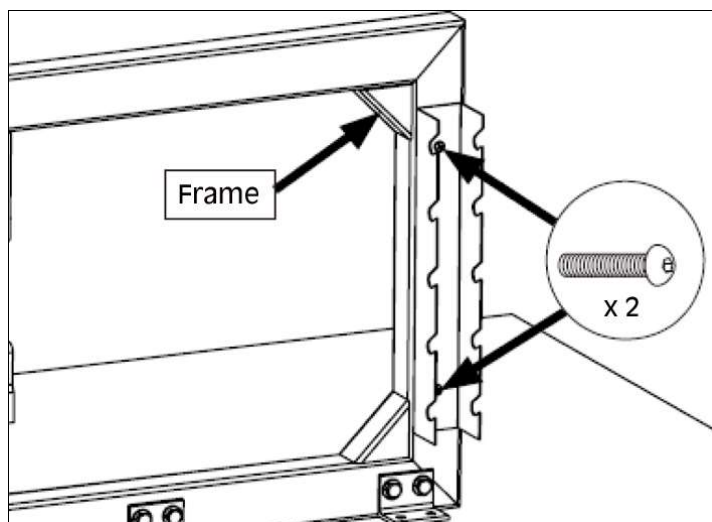


3. Mount the frame to a workbench using the mounting brackets, making sure there is clearance for the adjustment handle.

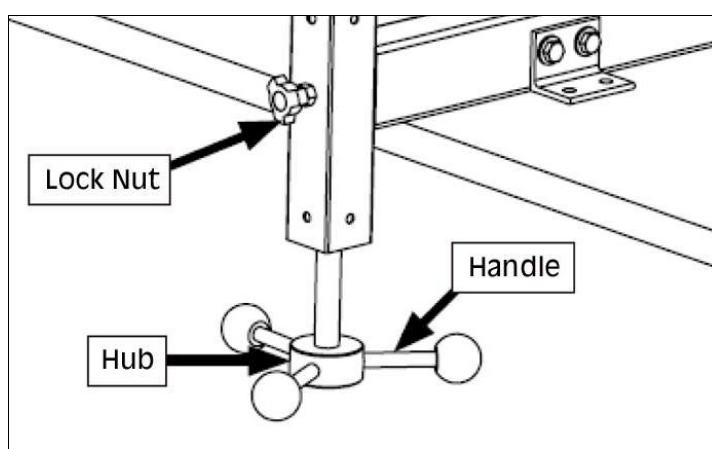
- If you are not ready to permanently mount the frame to a workbench, you can temporarily secure the frame to the workbench with 'G' clamps, as shown.



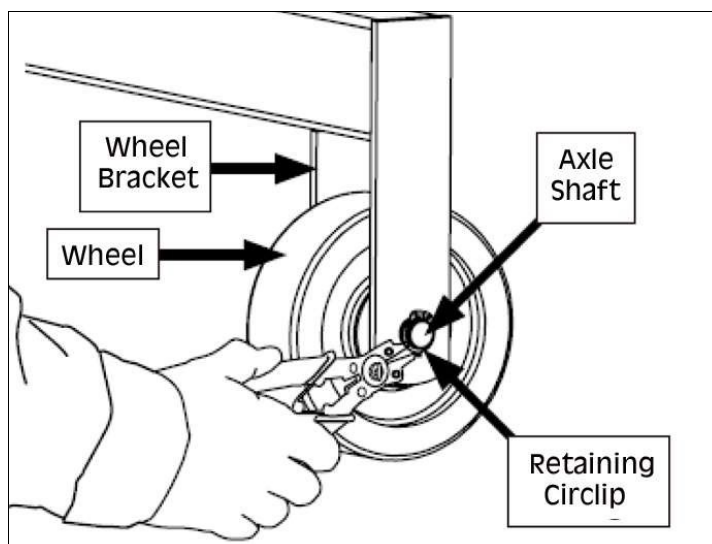
4. Attach the lower wheel storage rack to the frame using the M6-1 x 10 hex cap screws supplied.



5. Attach the 3 adjustment handwheel handles to the handwheel nub. Secure the handle by tightening the locking jam nut.



6. Attach the upper wheel to the wheel bracket using the axle shaft and a retaining circlip on each side.



---

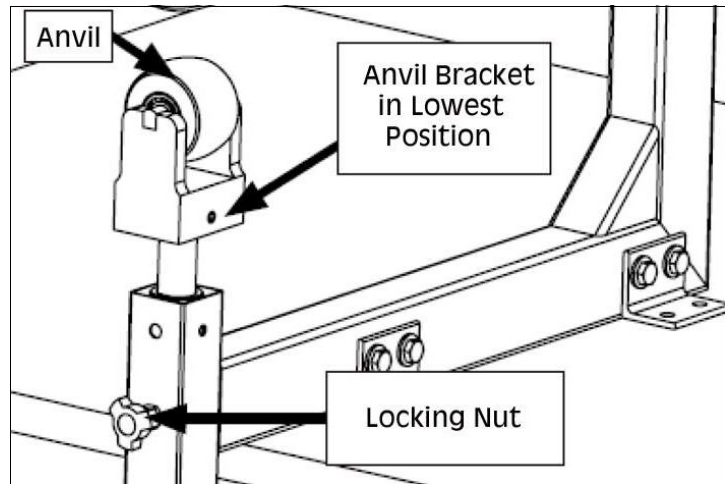
## REPLACING THE LOWER WHEEL

---

This English Wheel comes with 5 (3", 4", 5", 6" & 8" radius) crowned anvils (lower wheels) that will accommodate most curving operations.

### TO REPLACE A LOWER WHEEL

1. Loosen the locking jam nut and lower the anvil bracket to its lowest position using the handle.
2. Remove the anvil and replace it with the required one.
3. Using the handle raise the anvil bracket to the operating position and lock the nut in position.



---

## OPERATION

---



**WARNING: METAL EDGES CAN BE VERY SHARP. AVOID INJURIES BY WEARING APPROVED SAFETY GLOVES.**

1. Insert the sheet metal workpiece between the upper and lower wheels.
2. Turn the lower wheel adjustment handle to raise the lower wheel and gently pinch the workpiece.
  - Minor adjustments to the gap between the wheels can be made by raising or lowering the adjustment handle.
  - Pinching it tightly will make it harder to pass the metal through the wheels and may cause unwanted creasing.
  - Pinching it loosely makes work easier and therefore more accurate. However, it may take more passes to form the required shape.
3. Before starting to work the metal, turn the locking jam nut clockwise until tight to lock the lower wheel in position.
4. Begin forming the metal by pushing and pulling it through the wheels.

**NOTE:** If wheels form too high a crown in the workpiece, then use a lower wheel with a larger flat area.



**NOTE:** If wheels form too low a crown in the workpiece, use a lower wheel with a smaller surface area.

---

## **MAINTENANCE**

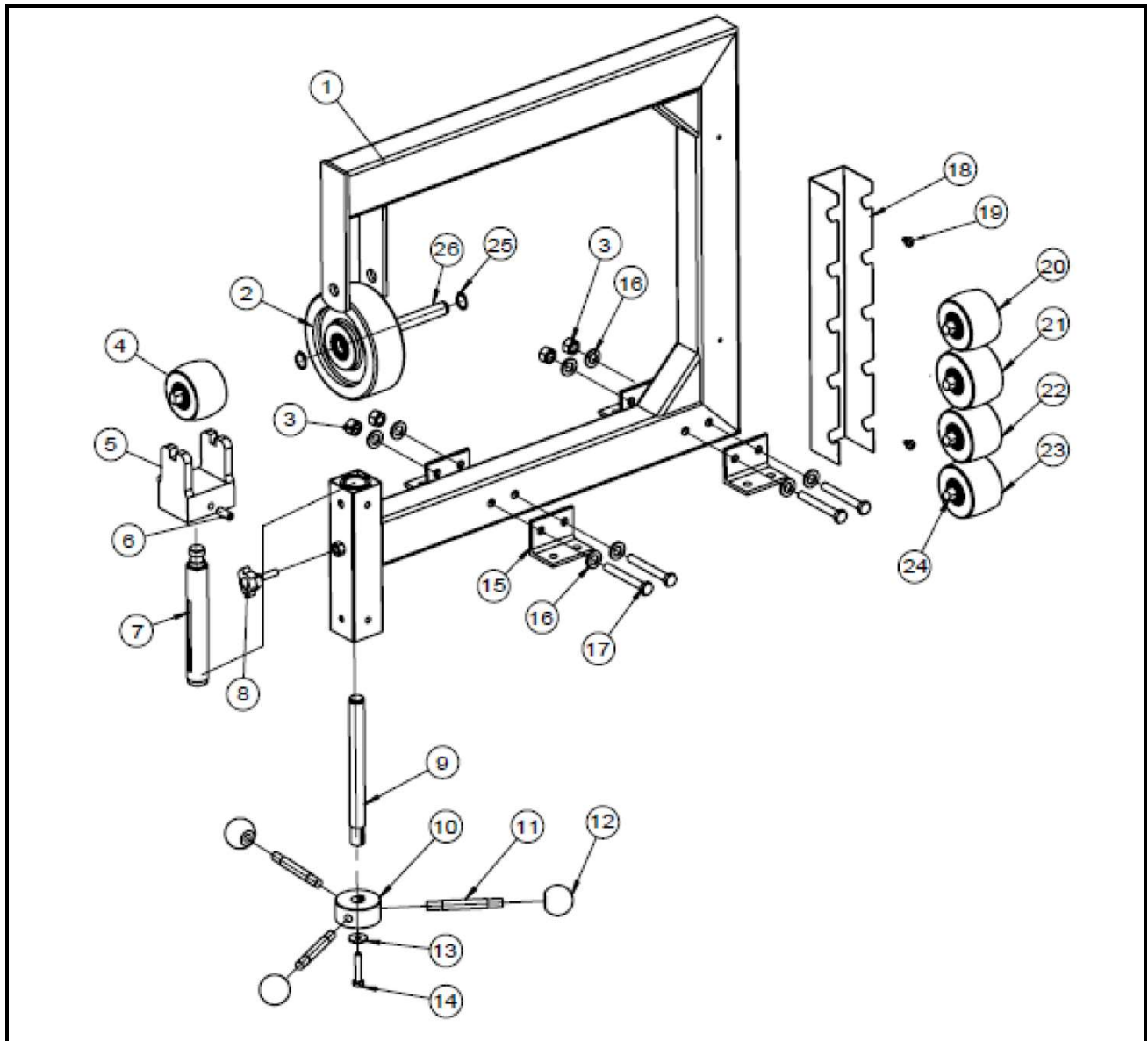
---

Always inspect the wheels before use and ensure they are in top condition. Check that all moving parts move smoothly and freely.

After use, keep the rollers clean and occasionally lubricate moving parts with a light oil. This will also inhibit any corrosion of the metal components.

For any technical problems or replacement wheels contact the CLARKE Service Department on 020-8988-7400 or [parts@clarkeinternational.com](mailto:parts@clarkeinternational.com).

# EXPLODED DIAGRAM



1	Frame
2	Top Wheel
3	Lock Nut M10
4	Lower Anvil 3" Radius
5	Anvil Bracket
6	Set Screw M10
7	Anvil Bracket Shaft
8	Locking Nut
9	Leadscrew
10	Handle Hub
11	Slotted Bolt
12	Handle Knob
13	Flat Washer 8mm

14	Cap Screw M8
15	Mounting Bracket
16	Flat Washer 10mm
17	Hex Bolt M10
18	Anvil Storage Rack
19	Button HD Cap Screw
20	Lower Anvil 4" Radius
21	Lower Anvil 5" Radius
22	Lower Anvil 6" Radius
23	Lower Anvil 8" Radius
24	Anvil Shaft
25	Circlip Retaining Ring
26	Top Wheel Shaft

## ASSOCIATED METALWORKING PRODUCTS

<p>Bench Vice - CV150B</p>	<p>3 in 1 Sheet Metal Machine - SBR610</p>	<p>Sheet Metal Folder - CMF24B</p>
		
<ul style="list-style-type: none"> <li>• 150mm Jaw Width</li> <li>• 160mm Jaw Opening</li> <li>• 75mm Jaw Depth</li> <li>• Part No. 6504011</li> </ul>	<ul style="list-style-type: none"> <li>• Bends, Slip Rolls &amp; Shears Sheet Metal: 1mm</li> <li>• Minimum Rolling Dia.: 39mm</li> <li>• Part No. 6560005</li> </ul>	<ul style="list-style-type: none"> <li>• Max Sheet Steel Capacity: 22 swg (0.71mm)</li> <li>• Max. Width Capacity: 600mm</li> <li>• Part No. 7630067</li> </ul>
<p>150mm Sheet Metal Shears - CPS150B</p>	<p>Double Headed Metal Nibbler- DHC-2</p>	<p>10" Tin Snips - CHT308</p>
		
<ul style="list-style-type: none"> <li>• Sheet Cutting Capacity: 5mm</li> <li>• Bar Cutting Capacity: 8mm Dia.</li> <li>• Part No. 1700261</li> </ul>	<ul style="list-style-type: none"> <li>• Max Cutting Cap.: Steel Plate - 1.8mm, Stainless Steel - 1.2mm, Copper - 2mm, Plastic - 2mm</li> <li>• Part No. 6500233</li> </ul>	<ul style="list-style-type: none"> <li>• Max Cut: Rolled Sheet Steel: 0.8mm</li> <li>• Part No. 1801308</li> </ul>

# A SELECTION FROM THE VAST RANGE OF

# Clarke®

## QUALITY PRODUCTS



### AIR COMPRESSORS

From DIY to industrial, Plus air tools, spray guns and accessories.

### GENERATORS

Prime duty or emergency standby for business, home and leisure.

### POWER WASHERS

Hot and cold, electric and engine driven - we have what you need

### WELDERS

Mig, Arc, Tig and Spot. From DIY to auto/industrial.

### METALWORKING

Drills, grinders and saws for DIY and professional use.

### WOODWORKING

Saws, sanders, lathes, mortisers and dust extraction.

### HYDRAULICS

Cranes, body repair kits, transmission jacks for all types of workshop use.

### WATER PUMPS

Submersible, electric and engine driven for DIY, agriculture and industry.

### POWERTOOLS

Angle grinders, cordless drill sets, saws and sanders.

### STARTERS/CHARGERS

All sizes for car and commercial use.

## PARTS & SERVICE: 0208 988 7400

**Parts Enquiries**  
[Parts@clarkeinternational.com](mailto:Parts@clarkeinternational.com)

**Servicing & Technical Enquiries**  
[Service@clarkeinternational.com](mailto:Service@clarkeinternational.com)

SALES: UK 01992 565333 or Export 00 44 (0)1992 565335

**Clarke®** INTERNATIONAL Hemnall Street, Epping, Essex CM16 4LG  
[www.clarkeinternational.com](http://www.clarkeinternational.com)